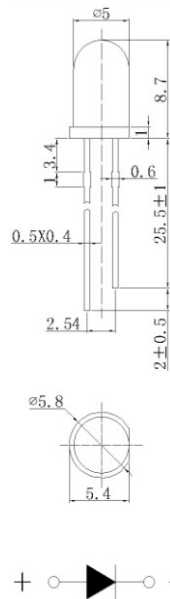


Specification for LED Product

3710

Package Dimensions(mm)



Notes:

All dimension units are millimeters.

All dimension tolerance is ± 0.2 mm unless otherwise noted.

An epoxy meniscus may extend about 1.5mm down the leads.

Burr around bottom of epoxy may be 0.5mm max.

Synopsis:

5mm Round Type

Water Clear Lens

White LED Lamp

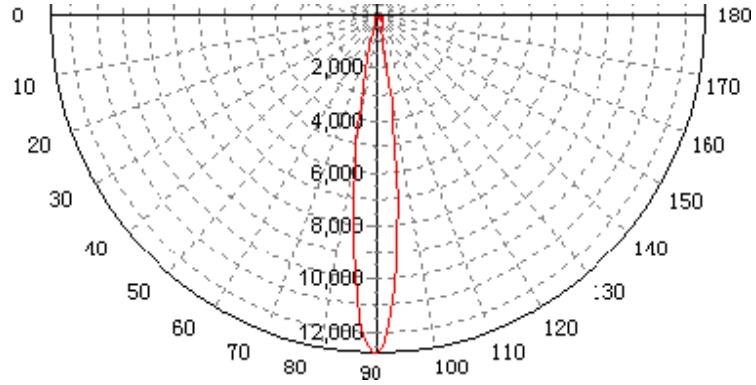
3710								
Categorize (Ta = 25°C)								
ITEMS	B10	B11	B12	B13	B14			单位 UNIT
Forward Voltage	3.0-3.2	3.0-3.2	3.2-3.4	3.2-3.4	3.0-3.2			V
Luminous Intensity	8000-10000	10000-12000	8000-10000	10000-12000	8000-10000			mcd
Chromaticity Coordinates	X	0,2662	0,2653	0,2713	0,2795	0,2803		
	Y	0,2508	0,264	0,2632	0,2792	0,285		
Colour Temperature	14000-21000	13000-22000	11000-15000	10000-12000	9000-12000			K
■ Typical Electrical & Optical Characteristics (Ta = 25°C)								
TEMS	SYMBOL		CONDITION	MIN.	TYP.	MAX.	UNIT	
Reverse Current	IR		VR = 5V	---	---	1,1	μA	
Dominant Wavelength	λ D		IF = 20mA	---	---	---	nm	
50% Power Viewing Angle	2θ½		IF = 20mA	14	15	17	deg	
■ Absolute Maximum Ratings at (Ta = 25°C)								
ITEMS	SYMBOL		ABSOLUTE MAXIMUM RATING				UNIT	
Forward Current	IF		50				mA	
Peak Forward Current	IFP		220				mA	
Continuous Forward Current	IL		20				mA	
Reverse Voltage	VR		5				V	
Power Dissipation	PD		170				mW	
Operation Temperature	Topr		-40 ~ +80				°C	
Storage Temperature	Tstg		-40 ~ +80				°C	
Lead Soldering Temperature	Tsol		Max.260°C for 5 sec Max.					

IFP Conditions: Pulse Width ≤ 10msec duty ≤ 1/10

Tsol Conditions: 4mm from the base of the epoxy bulb

3710

Spatial Distribution

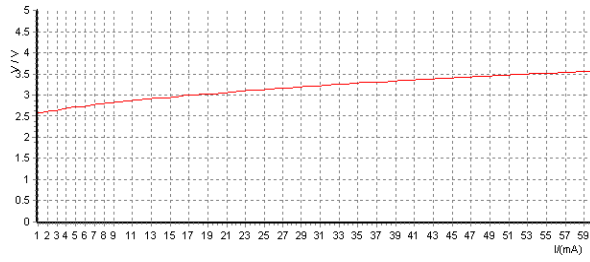
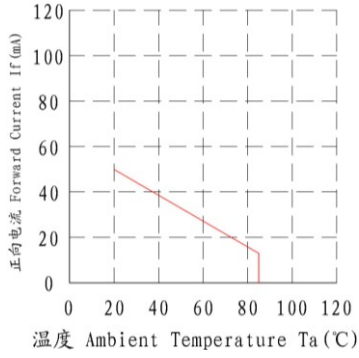


Reliability Performance

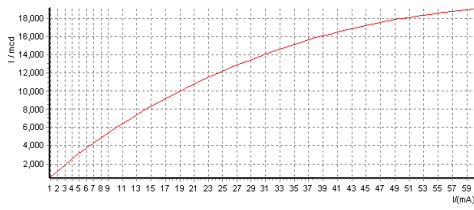
Test Classification	Test Item	Test Conditions	Test Duration	Sample Size	Standard
Life Test	Life Test	Ta=25°C±5°C, IF=20mA	1000(hrs)	10PCS	
Environment Test	Thermal Shock Test	-10 ±5 ↔+100 ±5 5min. 10sec. 5min.	100(cycles)	10PCS	
	Temperature Cycle Test	-55 ±5 ↔+85 ±5 30min. 5min. 30min.	100(cycles)	10PCS	
	High Temperature & High Humidity Test	Ta=85°C±5°C RH=85%±0.5 %RH	240(hrs)	10PCS	
	High Temperature Storage	Ta=100°C±5°C	1000(hrs)	10PCS	
	Low Temperature Storage	Ta=-55°C±5°C	1000(hrs)	10PCS	
Mechanical Test	Resistance to Soldering Heat	Ta=260°C±5°C	5 (sec.)	10PCS	
	Lead Integrity	0° ~ 90° ~ 0°	3 (times)	10PCS	

3710

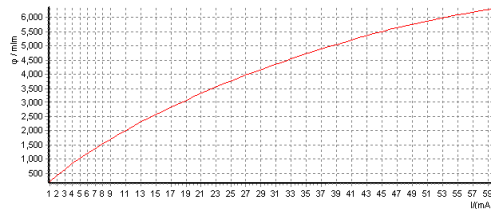
Typical Optical/Electrical Characteristics Curves (Ta=25°C Unless Otherwise Noted)



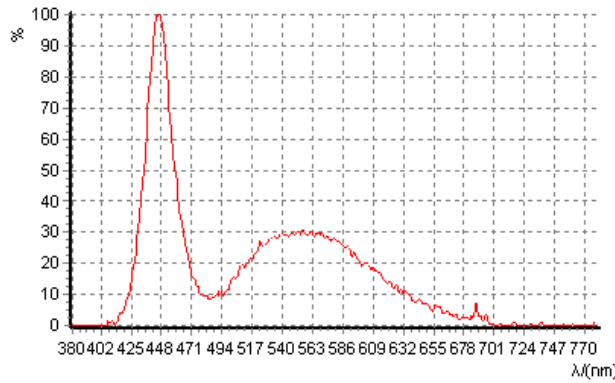
Current-Voltage Curve



Current-Luminous intensity Curve

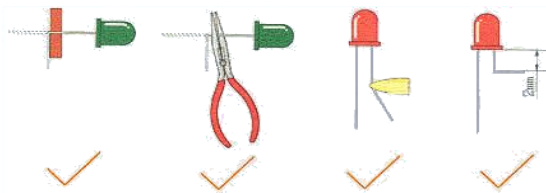


Current-Luminous flux Curve

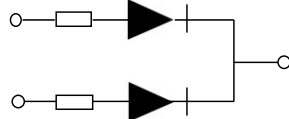


Relative Spectral Distribution Curve

3710



Circuit model A



Circuit model B

